

OpenStreetMap



Co to je?

- ▶ Projekt pro tvorbu volně dostupných dat.
- ▶ Většina dostupných geografických dat není volně dostupná.

Je takový projekt vůbec spolehlivý?

- ▶ Ano, svým způsobem.
- ▶ Uživatelé se hlídají navzájem.

Editace

- ▶ Možno přes několik editorů:
- ▶ ID
- ▶ Portlach 2
- ▶ JOSM
- ▶ Merkaartor

Formáty dat

- ▶ Uzly - body
- ▶ Cesty - posloupnost uzlů; představuje polylinii, pokud je polylinie uzavřená, tak polygon
- ▶ Relace - uspořádání uzlů, cest a dalších relací
- ▶ Atributy - data, popisující výše zmíněné formáty

ID

← → ↻ openstreetmap.org/edit?editor=id#map=15/49.8027/13.4221

OpenStreetMap Upravit Historie Export GPS stopy Deníky uživatelů Autorská práva Nápověda O projektu JonersB

Hledat prvky

Hledat

Prozkoumat Bod Linie Plocha Přidat prvek Zpět/vpřed Uložit

+ Pro editaci přiblížte

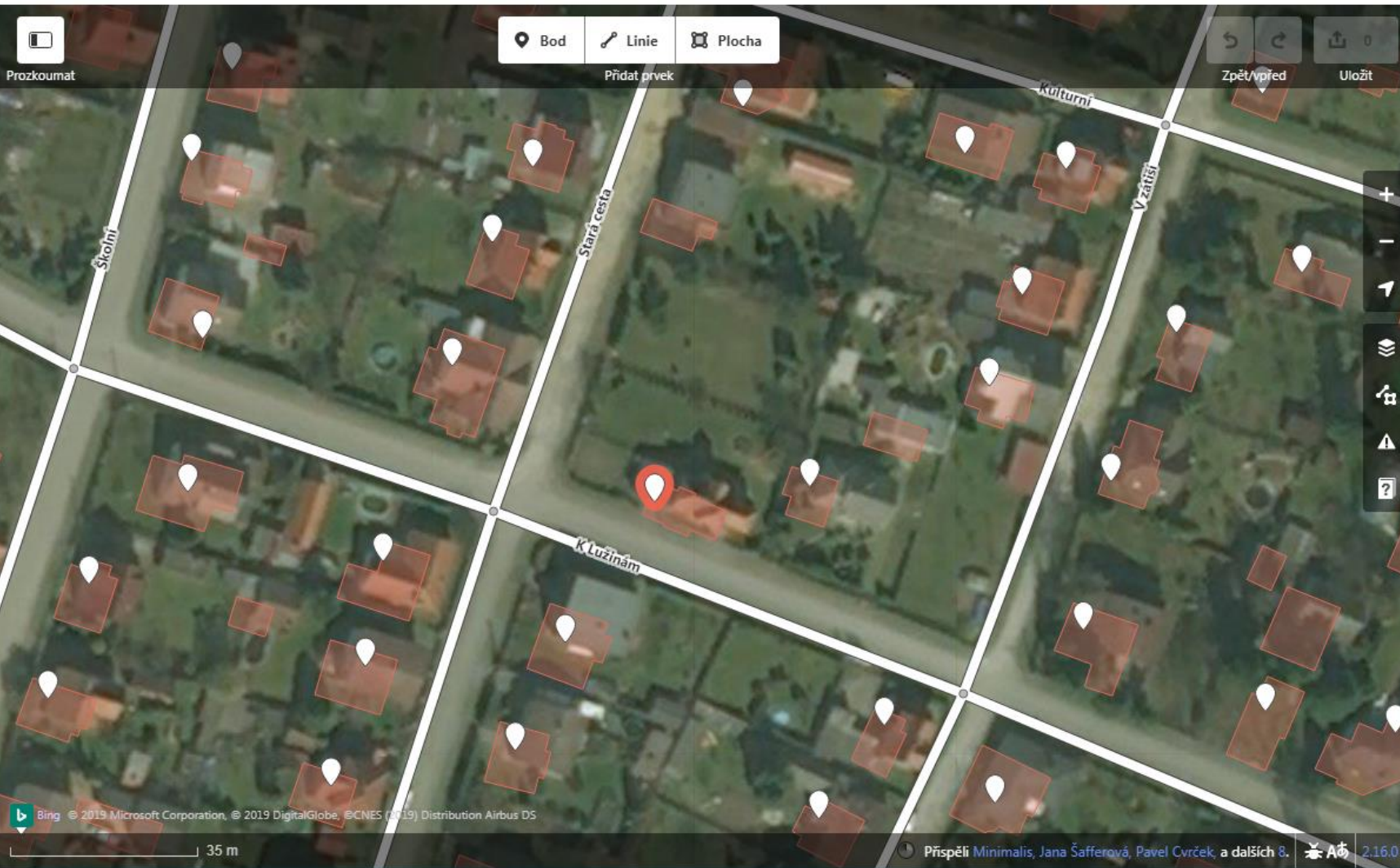
Zruč-Senec

Senec

400 m

Bing © 2019 Microsoft Corporation, © 2019 DigitalGlobe, © CNES (2018) Distribution Airbus DS Podmínky použití a zpětná vazba 2.16.0

Edítovat prvek



Adresa

Přiblížit na prvek

Všechny vlastnosti

Adresa

K Lužinám 149 Jednotka

33008 Město

Přidat vlastnost: Datum počátku existence, Nadmořská ...

Všechny vlastnosti (7)

Všechny relace (0)

+

Portlacht 2

Uložit [Nápověda](#) [Zpět](#) [Znovu](#) [Podklad](#) [Styl mapy](#) [GPS data](#) [Bookmarks](#) [Tasks](#) [Možnosti](#)

Add new points by dragging them onto the map

Shopping: [Show all](#)

- Supermarket
- Small Convent
- Bakery
- Alcohol shop
- Bike shop
- Bookshop

Food and Drink: [Show all](#)

- Water fountain
- Vending mach
- Pub
- Bar
- Restaurant
- Cafe

Amenity: [Show all](#)

- Fire station
- Police Station
- Library
- Hospital
- Defibrillator
- Veterinarian

Tourism: [Show all](#)

- Museum
- Archaeologica
- Battlefield
- Castle
- Memorial
- Monument

Accommodation: [Show all](#)

- Hotel
- Motel
- Hostel
- Guesthouse (E
- Campsite
- Caravan park

Transport: [Show all](#)

- Car Wash
- Airport
- Airport termins
- Helipad
- Airport gate
- Bus Stop

Water:

- Weir
- Marina
- Slipway

Natural:

- Peak
- Tree

Barrier: [Show all](#)

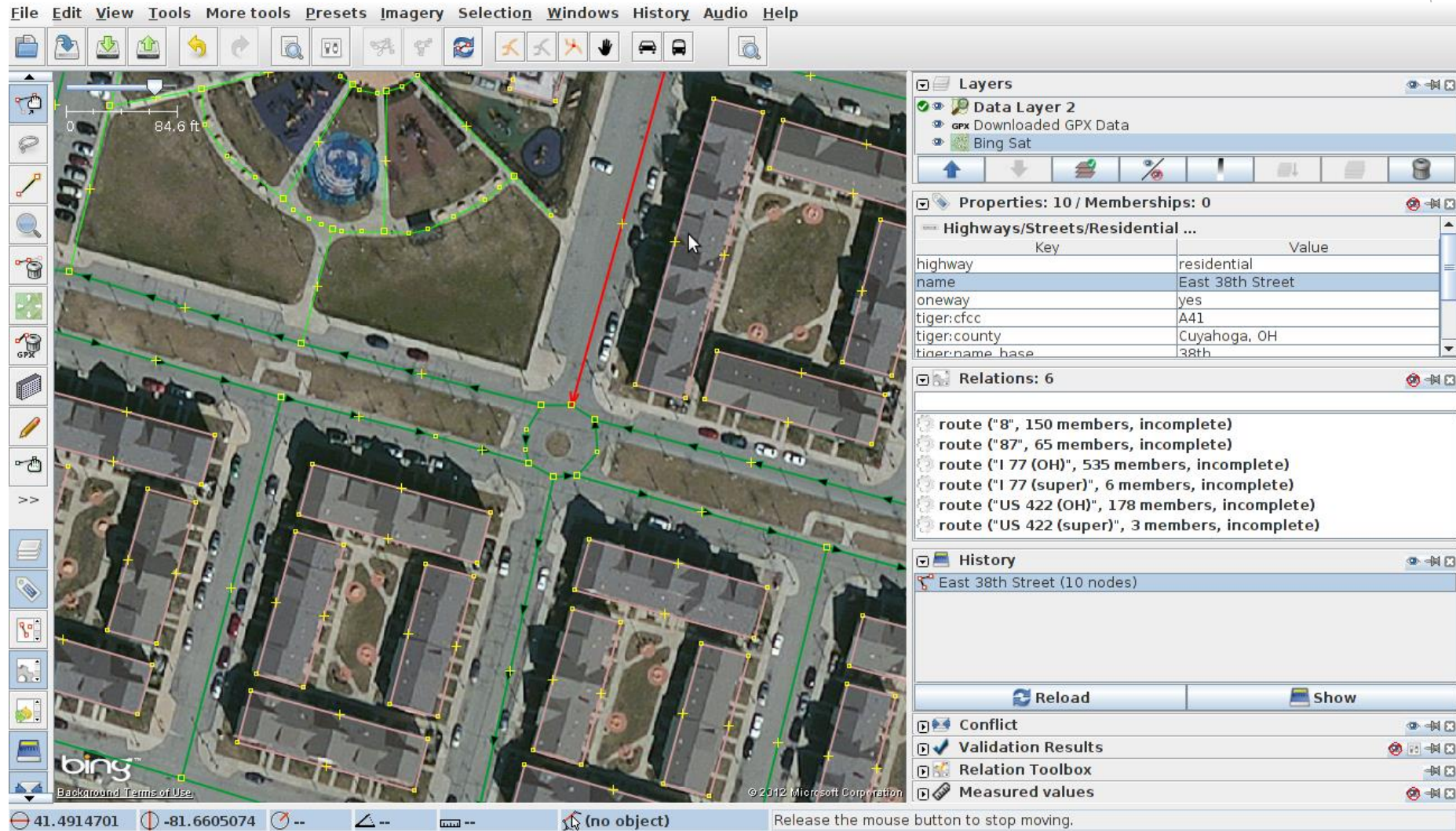
bing
Background ©CNES
2019 Microsoft Corp

Click object to select. Click blank area to start drawing way. Double-click blank area to create point. Drag blank area to move map.

Show more

JOSM

File Edit View Tools More tools Presets Imagery Selection Windows History Audio Help



Layers

- Data Layer 2
 - GPX Downloaded GPX Data
 - Bing Sat

Properties: 10 / Memberships: 0

Highways/Streets/Residential ...

Key	Value
highway	residential
name	East 38th Street
oneway	yes
tiger:cfcc	A41
tiger:county	Cuyahoga, OH
tiger:name_base	38th

Relations: 6

- route ("8", 150 members, incomplete)
- route ("87", 65 members, incomplete)
- route ("1 77 (OH)", 535 members, incomplete)
- route ("1 77 (super)", 6 members, incomplete)
- route ("US 422 (OH)", 178 members, incomplete)
- route ("US 422 (super)", 3 members, incomplete)

History

- East 38th Street (10 nodes)

Reload Show

Conflict

Validation Results

Relation Toolbox

Measured values

41.4914701 -81.6605074 (no object) Release the mouse button to stop moving.

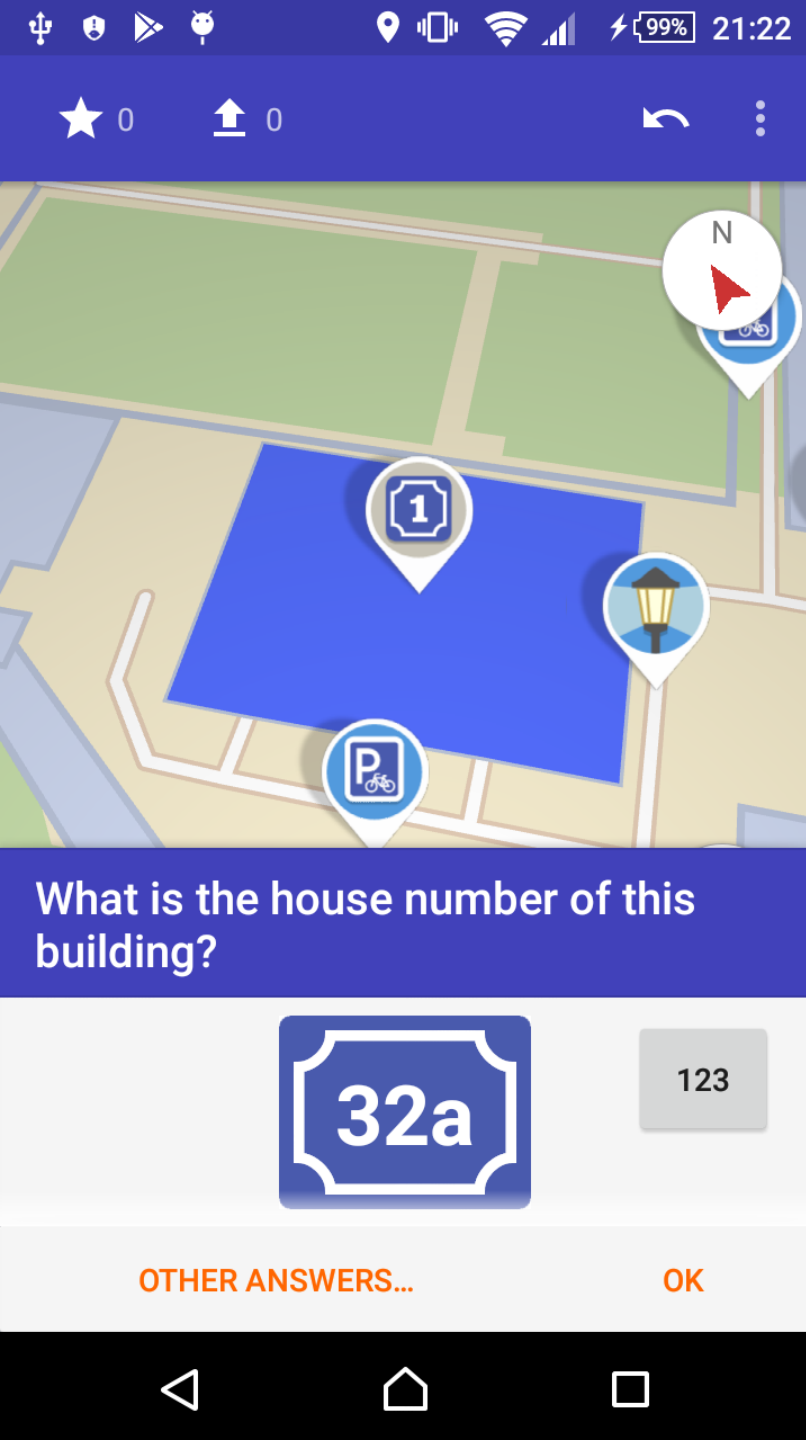
Merkaartor

The screenshot displays the Merkaartor map editor interface. The central map shows a city street grid with a church building highlighted in blue. The interface is divided into several panels:

- Menu Bar:** File, Edit, View, Show, Gps, Layers, Create, Feature, Node, Road, Relation, Tools, Window, Help.
- Toolbar:** Download, Download more, Upload, Save, Copy, Paste, Paste tags, Remove, Undo, Redo, Select, Move, Rotate, Scale, Node, Road, Area, Align, Spread.
- Layers Panel:** All, Map, Draw, Tracks. Layers include Map - None, Drawing layer #0, and map.osm.
- Properties - Road Panel:** Id: 306856888, Place of Worship, Name: Église Saint-Nicolas - Sint-Niklaaskerk, Amenity: place_of_worship, Religion: Christian, Denomin: catholic.
- Tags Table:**

Key	Value
amenity	place_of_worship
building	yes
denomination	catholic
name	Église Saint-Nicolas - Sint-Nikla...
name:de	Nikolaikirche
name:fr	Église Saint-Nicolas
name:nl	Sint-Niklaaskerk
ref:UrbIS	8187687
religion	christian
wikipedia	fr:Église Saint-Nicolas (Bruxelles)
Edit this to add...	
- Info Panel:** Edit Interaction, Edit Interaction.
- Undo Panel:** There is no dirty object.
- Styles Panel:** Mapnik.mas (int), MapnikPlus.mas (int), Maxspeed.mas (int).
- Features Panel:** Relations, Roads, POI's, All. Only features fully within the viewport.
- GPS Panel:** No Fix, No Time, Latitude 99 99' 99", Longitude 99 99' 99", Altitude 1000 meter, # Satellites 00, Fix Type Invalid, Speed 000 km/h, No satellites.

Coordinates: 4.3502,50.8467,4.3525,50.8491 / 484264,0789,6594220,8443,484518,6655,6594640,8626. Scale: 0.31 m/pixel 3ms.



Děkuji za pozornost